

# THE FIRST LETTER

A worksheet for the letter 'd'. It features a horizontal line with two clothespins. Above the line are two daisies and a blue bird. Below the line are two large white circles for writing. At the bottom, there are two rows of icons: the first row has a monkey, an orange, and a nose; the second row has a green dinosaur, a blue airplane, and a yellow smiley face. The 'Lunika' logo is in the bottom right corner.

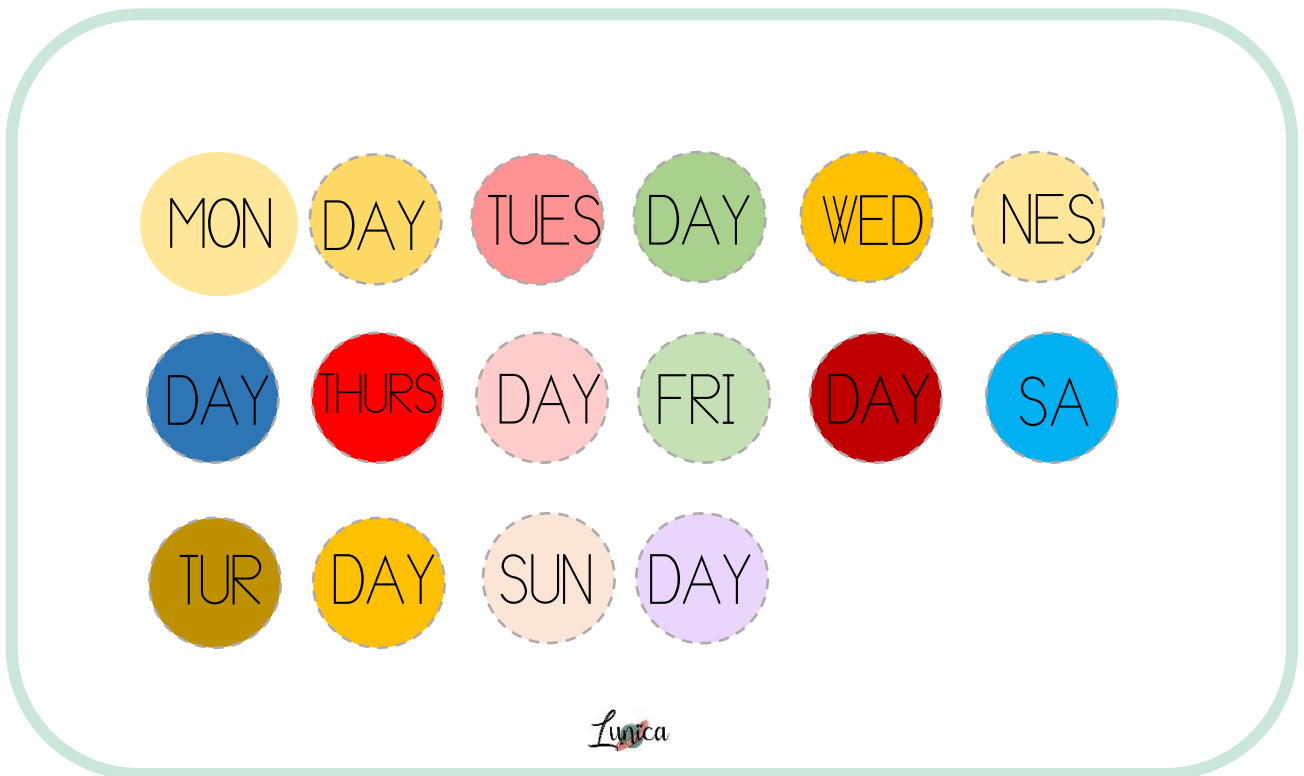
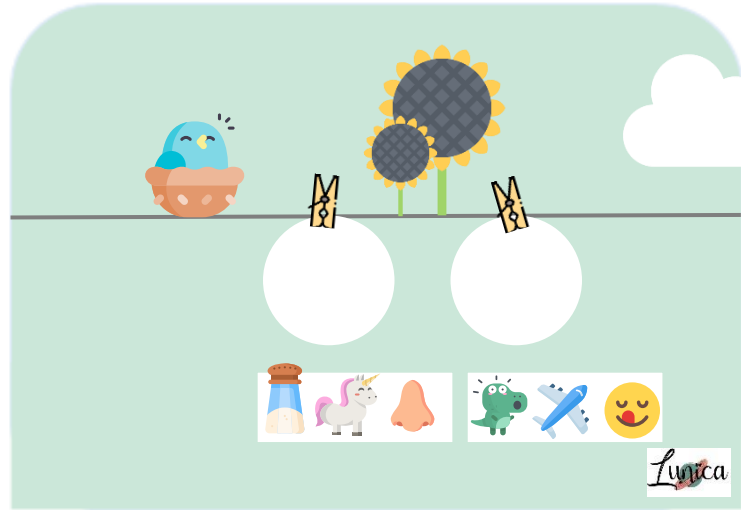
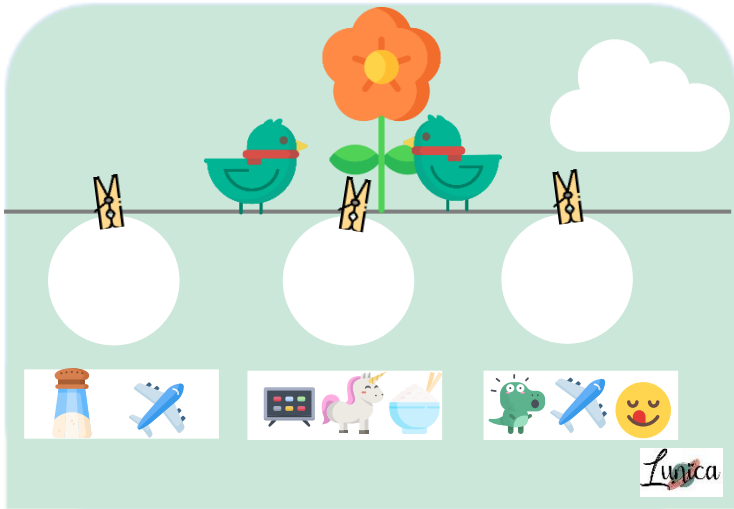
A worksheet for the letter 'c'. It features a horizontal line with two clothespins. Above the line are a white cloud, a dandelion, and three colorful birds. Below the line are two large white circles for writing. At the bottom, there are two rows of icons: the first row has a TV, a unicorn, an elephant, and a lighthouse; the second row has a green dinosaur, a blue airplane, and a yellow smiley face. The 'Lunika' logo is in the bottom right corner.

A worksheet for the letter 'e'. It features a horizontal line with three clothespins. Above the line are a duck, a white cloud, and blue flowers. Below the line are three large white circles for writing. At the bottom, there are two rows of icons: the first row has a water bottle, an elephant, and a green dinosaur; the second row has a nose, an elephant, a lighthouse, a green dinosaur, a blue airplane, and a yellow smiley face. The 'Lunika' logo is in the bottom right corner.

A worksheet for the letter 'o'. It features a horizontal line with two clothespins. Above the line are a purple bird, a white cloud, and a white flower. Below the line are two large white circles for writing. At the bottom, there are two rows of icons: the first row has a TV, a yellow smiley face, a unicorn, a bowl, and a lighthouse; the second row has a green dinosaur, a blue airplane, and a yellow smiley face. The 'Lunika' logo is in the bottom right corner.

A worksheet for the letter 'm'. It features a horizontal line with two clothespins. Above the line are two brown birds and a flower. Below the line are two large white circles for writing. At the bottom, there are two rows of icons: the first row has a blue refrigerator, a bowl, and an ice cream cone; the second row has a green dinosaur, a blue airplane, and a yellow smiley face. The 'Lunika' logo is in the bottom right corner.

m



Lunica



@secretosdemama\_oficial