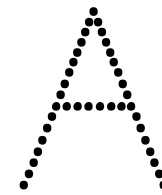
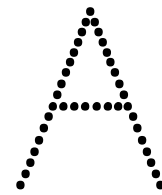
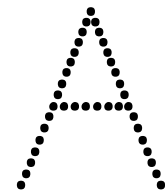
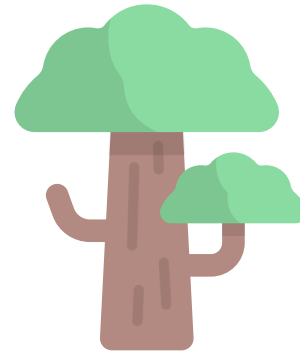
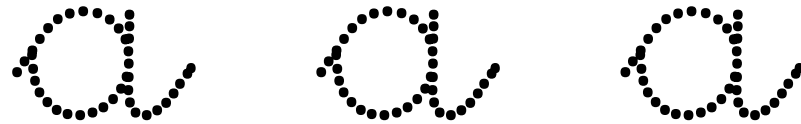
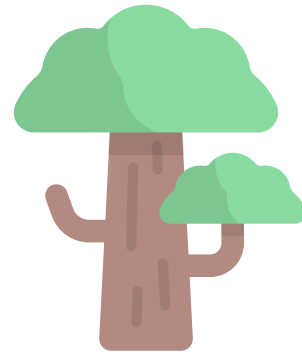


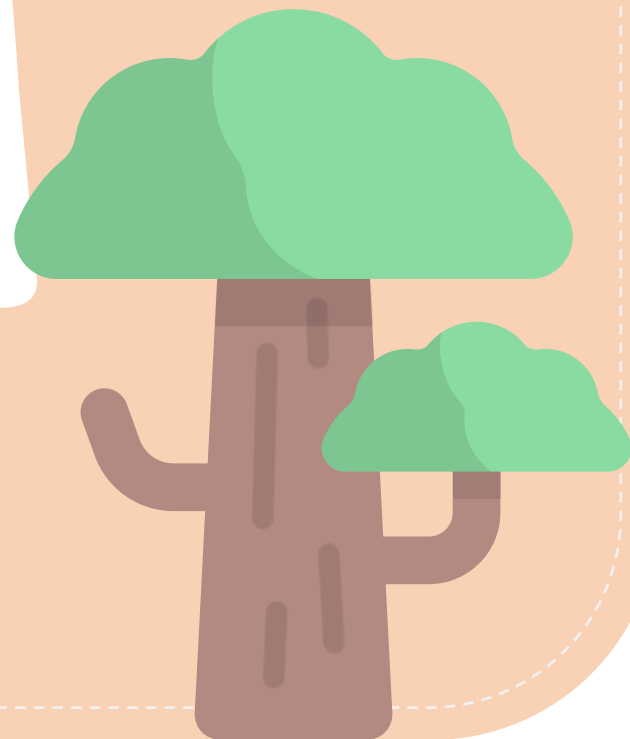
A R B R E



arbre



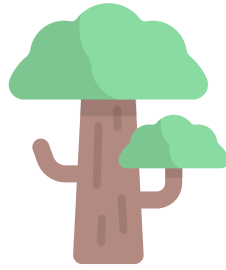
A O



Lunika



Aa



Lunika

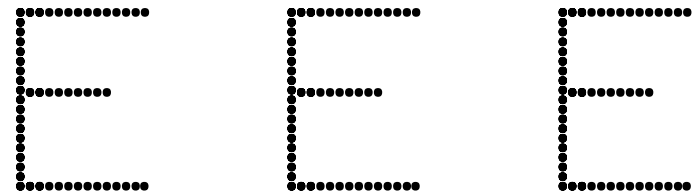
E

e



Lynica

ERICÓ



ericó





E m m e

e m m e

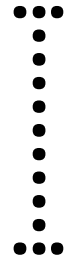
E e





Lynica

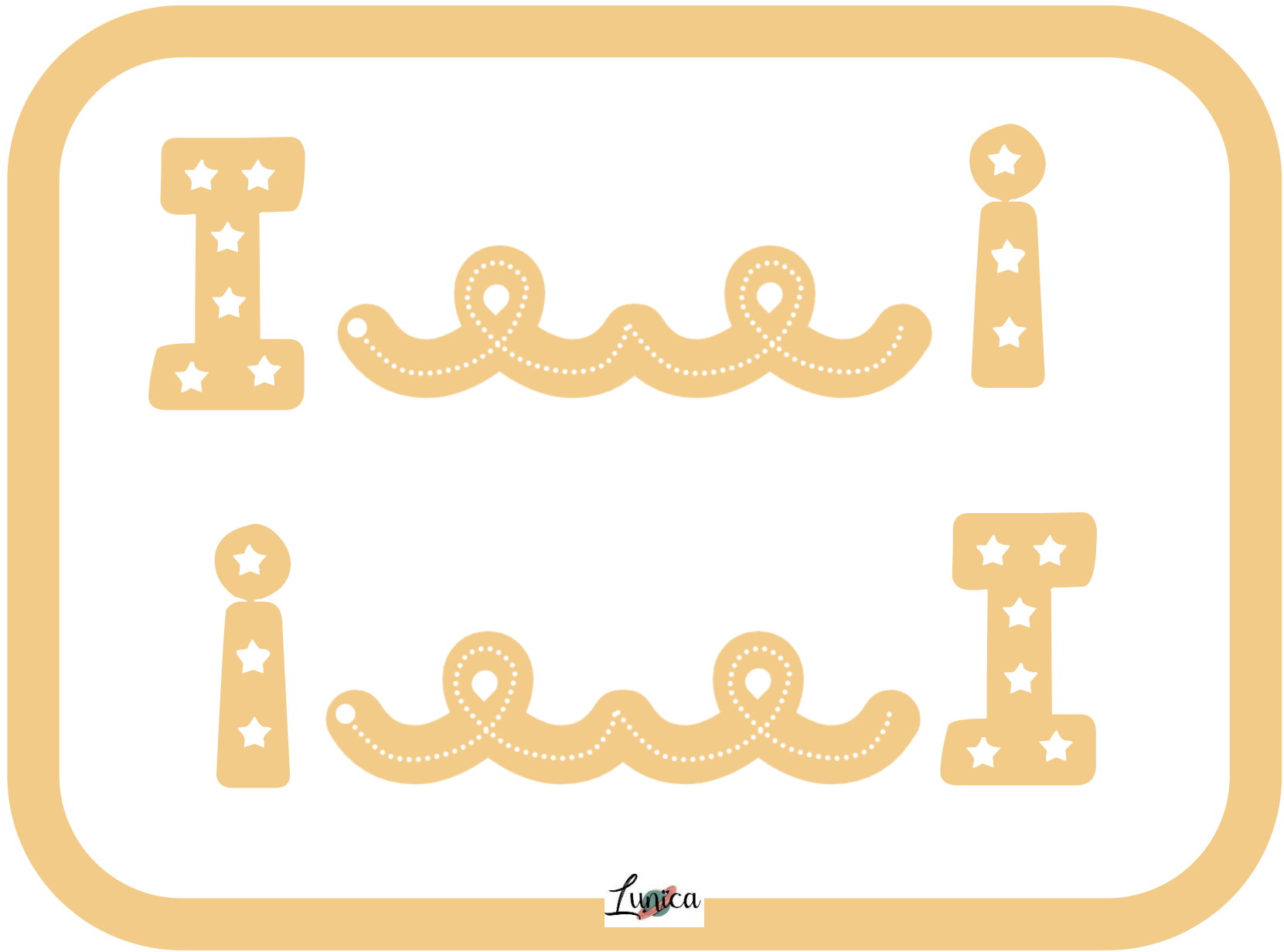
ILLA



illa



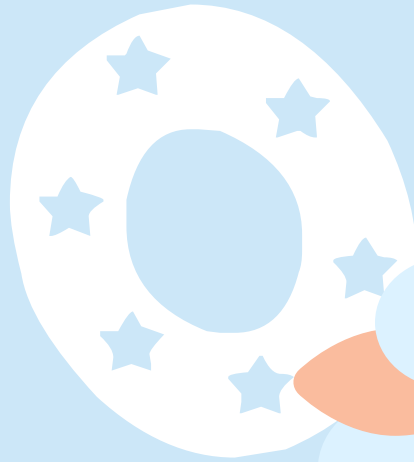
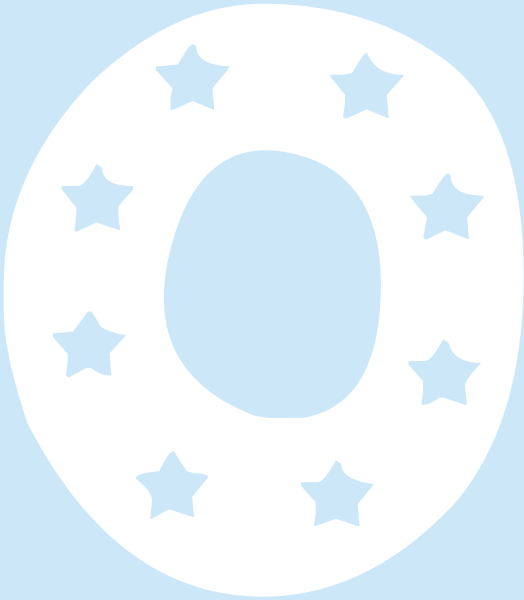
i i i



Ii



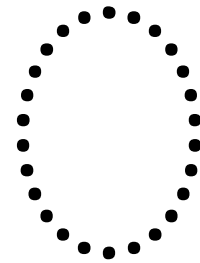
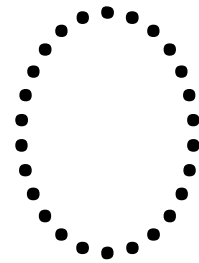
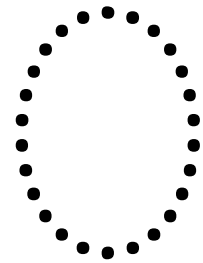
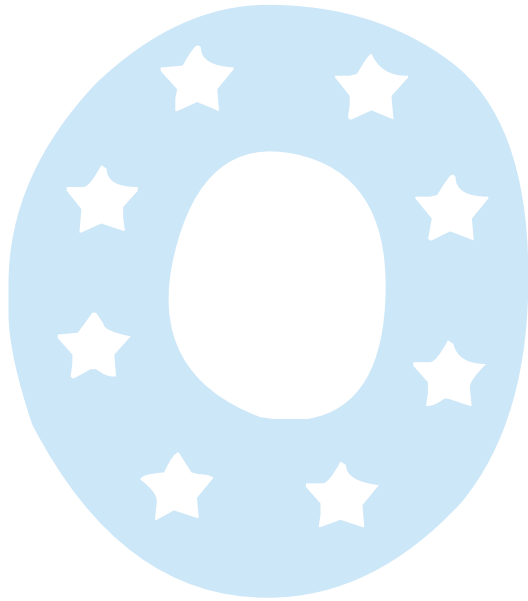
Lynica



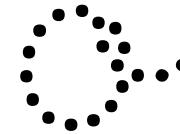
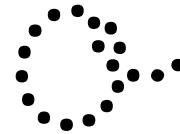
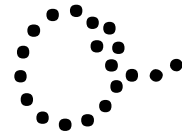
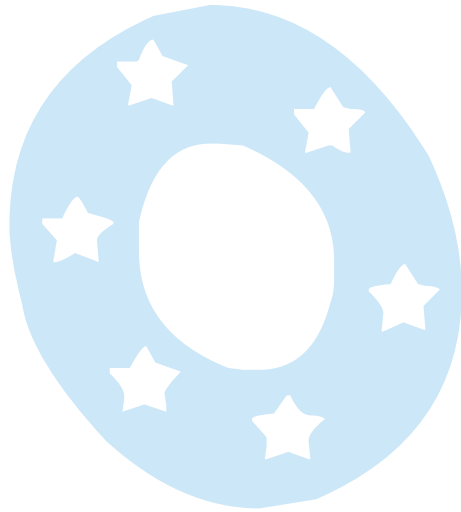
Lunika

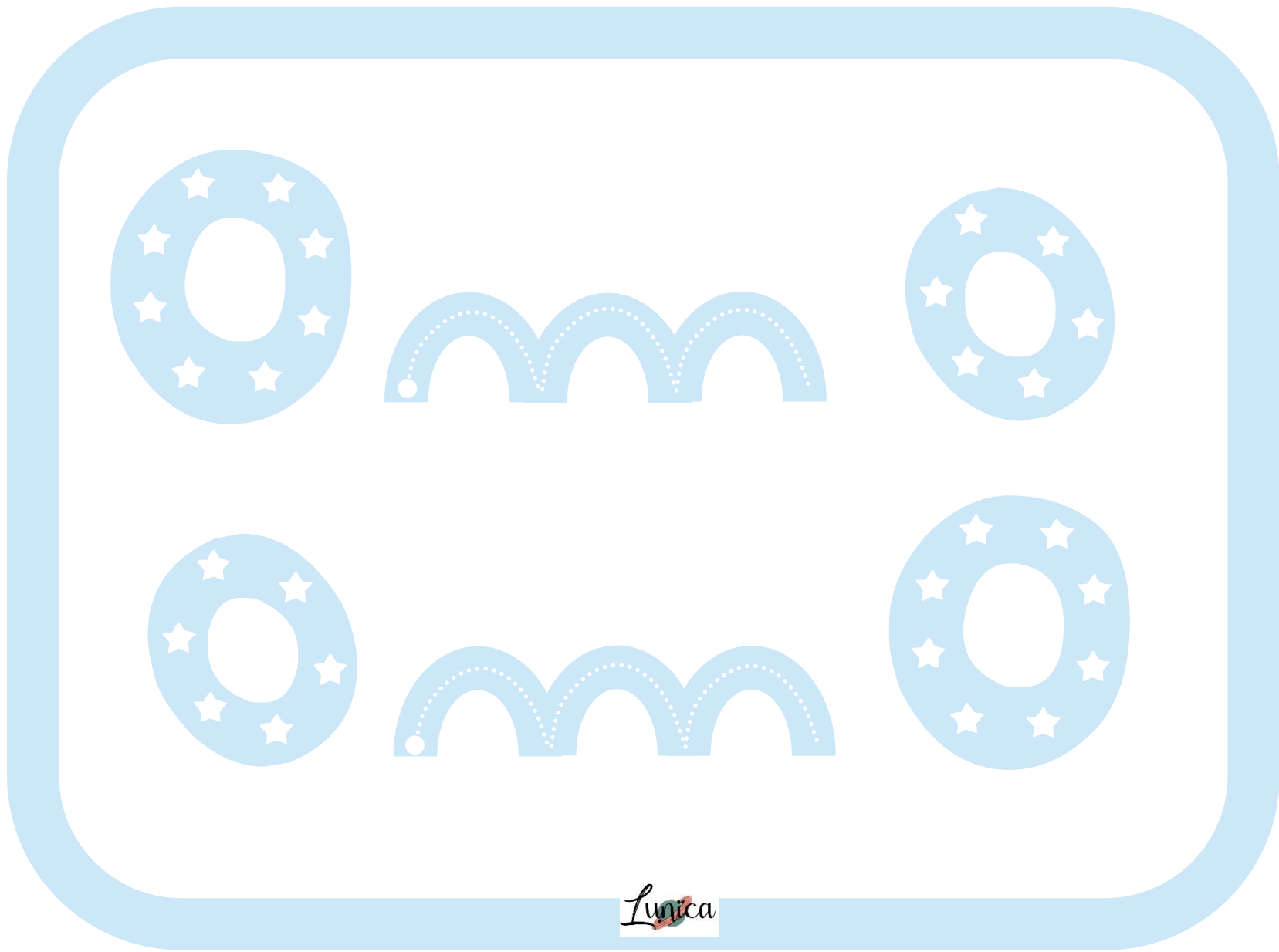


OVELLA

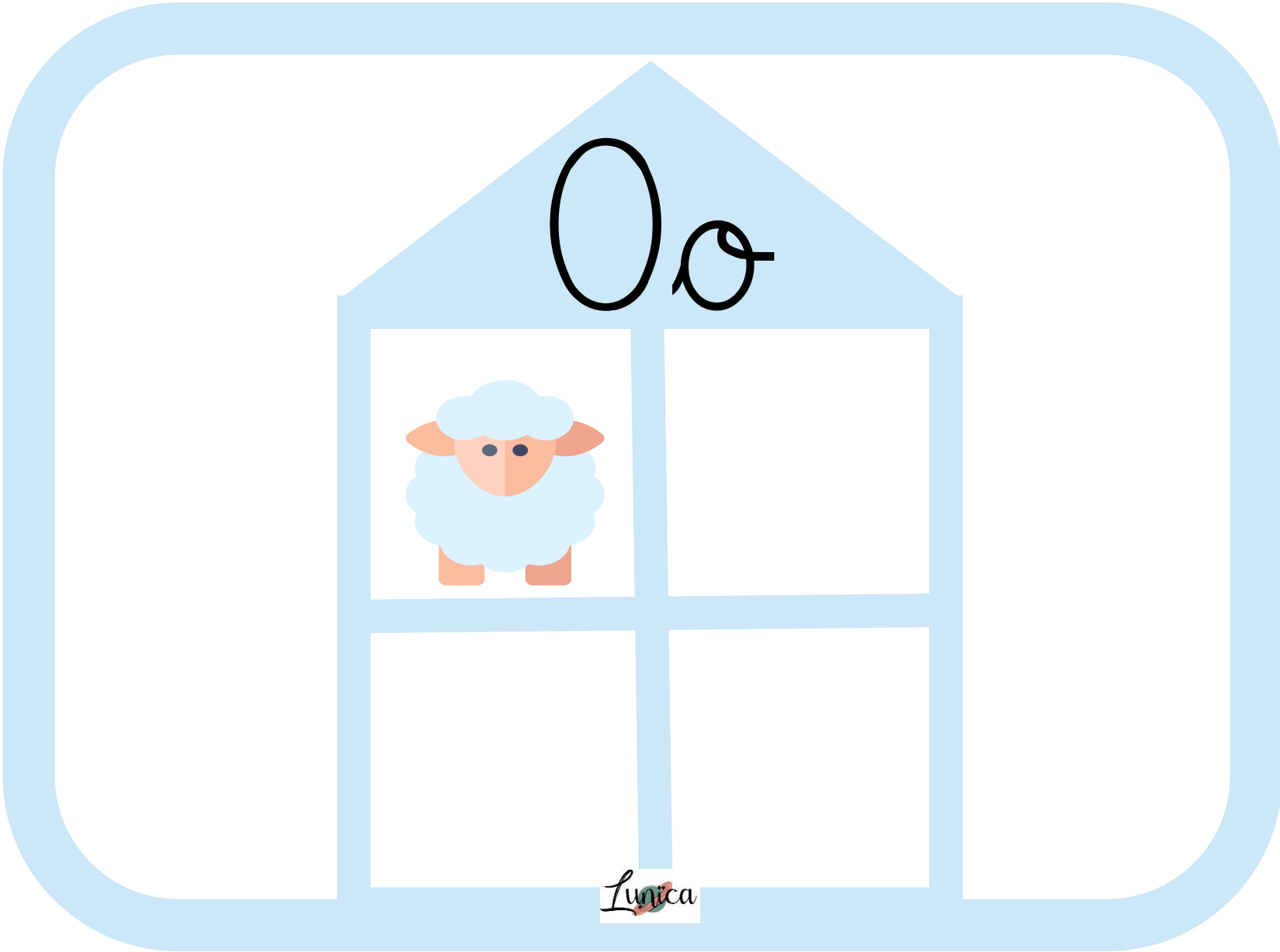


Ovella

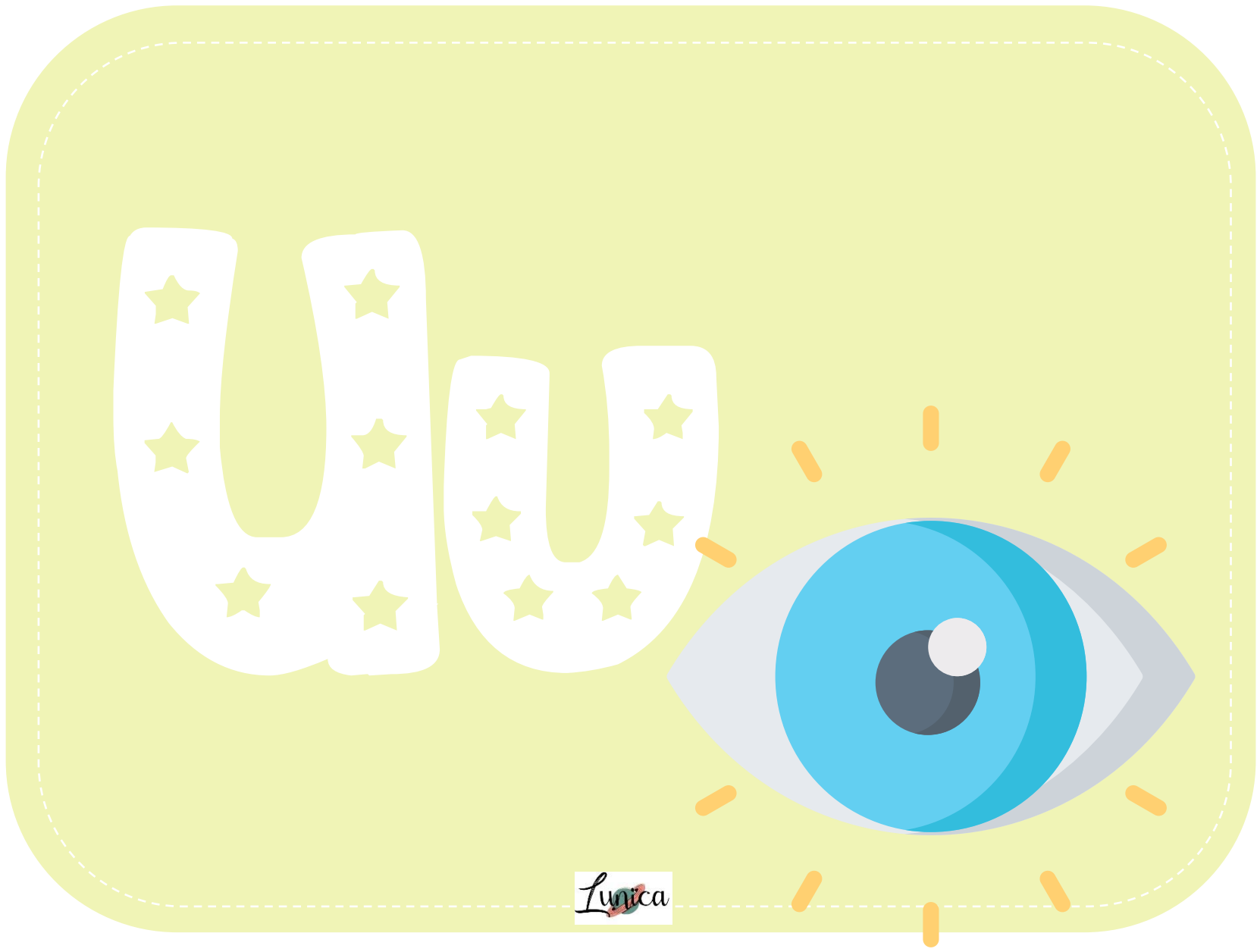




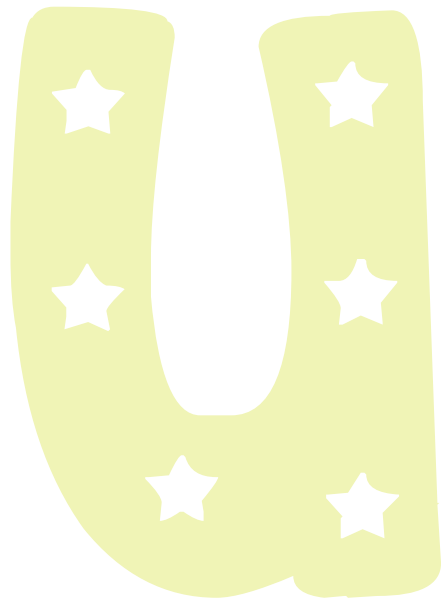
Lunika



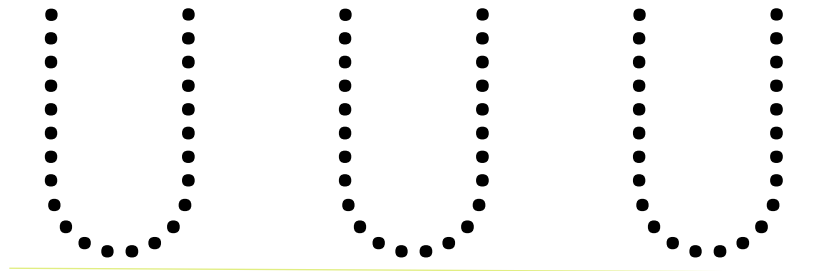
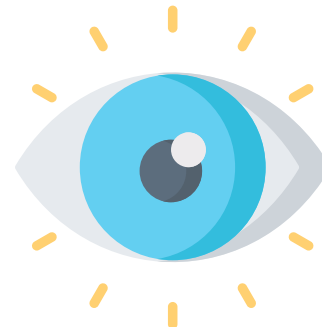
Lynica



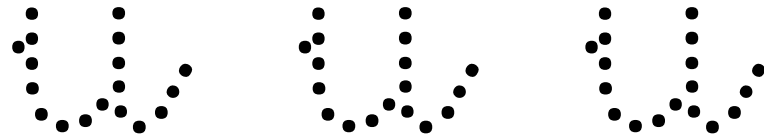
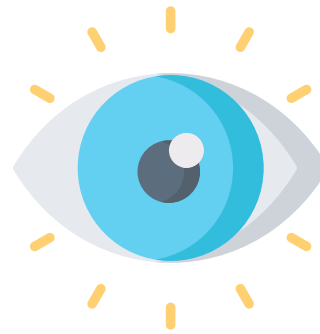
Lunika

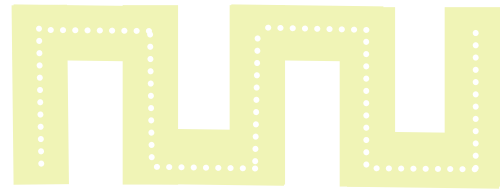
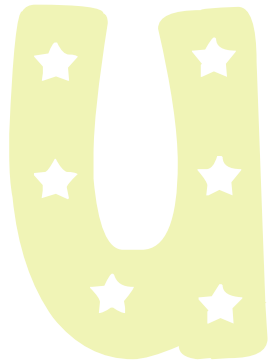


ULL

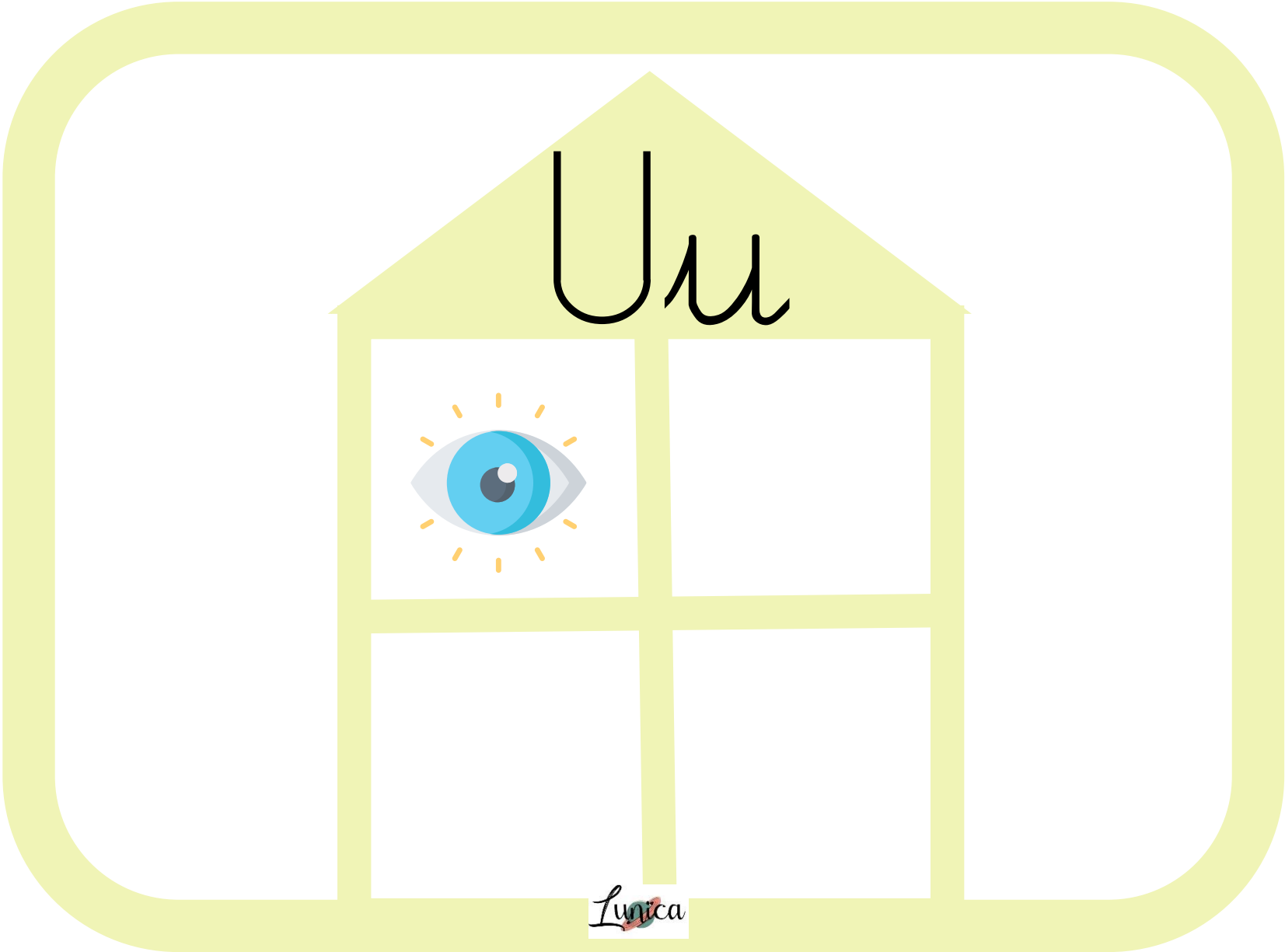


all



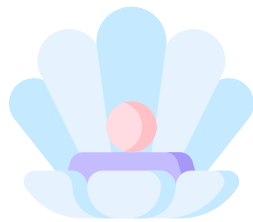
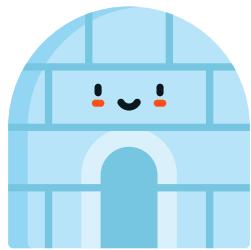
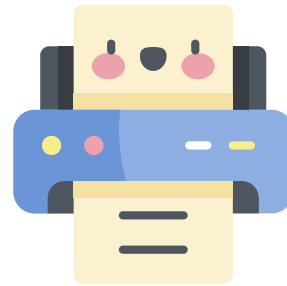
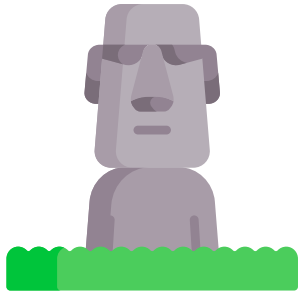
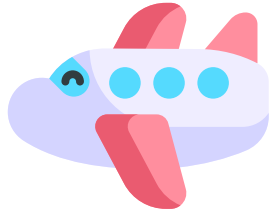




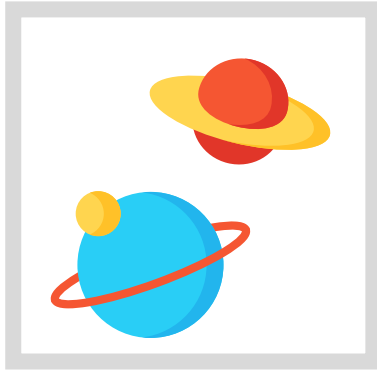
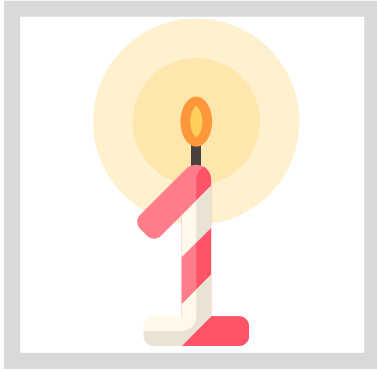


Lunica

Lumca



Lynca



Lunika

A stylized illustration of a planet with a teal-green surface and a reddish-orange ring system, positioned behind the letters 'u' and 'n' of the word 'Lunika'.